

Where have you been? What sights have you seen?

TEST YOUR TRAVEL KNOWLEDGE
WITH CLUB WYNDHAM

It is your second chance to test your worldly knowledge with our Quiz #2.
Answers on page 3.

1. Vancouver is the capital of which Canadian state?

- a. Quebec
- b. British Columbia
- c. Ontario
- d. Alberta

2. In which of the following Australian cities would you find two Club properties?

- a. Sydney
- b. Cairns
- c. Sunshine Coast
- d. Melbourne

3. What is the capital of Mongolia?

- a. Zumaia
- b. Tianjin
- c. Ölgii
- d. Ulaanbaatar

**4. About how large is the world's largest rainforest, the Amazon?
(Pick the closest size)**

- a. 5.5 million square kilometres
- b. 5.7 million square kilometres
- c. 5.9 million square kilometres
- d. 6.1 million square kilometres

Share your results with us in the comments
section of this post on your owner website
or in our social channels!



TRAVEL EXCITE LEARN EXPLORE TEACH SIGHTS PLAY

5. The 2026 soccer (football) World Cup will be played in which country/ies?

- a. Argentina
- b. Austria and the Czech Republic
- c. United States, Canada and Mexico
- d. Qatar

6. In which Australian state would you find Bagdad?

- a. Western Australia
- b. Tasmania
- c. Victoria
- d. New South Wales

7. Which current Club Wyndham South Pacific property was the first to become part of the club?

- a. Club Wyndham Sydney
- b. Club Wyndham Kirra Beach
- c. Club Wyndham Lakes Entrance
- d. Ramada Resort by Wyndham Golden Beach

8. Which country does the Wallace Line run through?

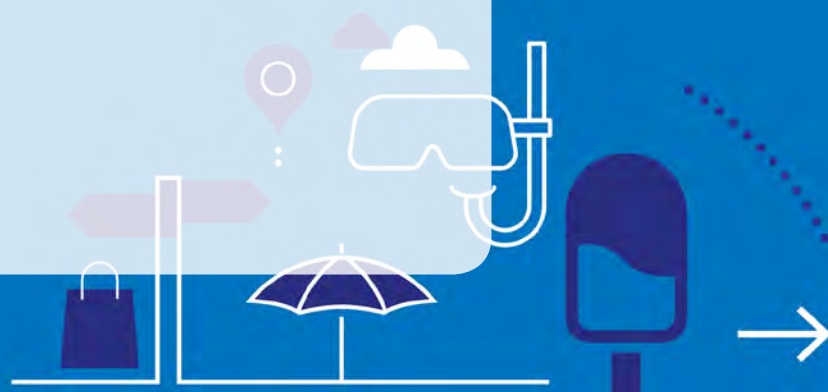
- a. England
- b. Singapore
- c. India
- d. Indonesia

9. The population of Iceland is closest to?

- a. 404,000 people
- b. 510,000 people
- c. 365,000 people
- d. 462,000 people

10. Thimphu, the only capital city in the world without traffic lights, is in which country?

- a. Bahrain
- b. Bhutan
- c. Turkmenistan
- d. Honduras



How much did you know?

ANSWERS ARE BELOW.

1. Vancouver is the capital of which Canadian state? **ANSWER IS B.** British Columbia

2. In which of the following Australian cities would you find two Club properties?

ANSWER IS C. On the Sunshine Coast you will find two Club properties being Ramada Marcoola Beach and Ramada Golden Beach.

3. What is the capital of Mongolia? **ANSWER IS D.** Ulaanbaatar

4. Approximately how large is the world's largest rainforest, the Amazon?

ANSWER IS A. 5.5 million square kilometres

5. The 2026 soccer (football) World Cup will be played in which country/ies?

ANSWER IS C. United States, Canada and Mexico

6. In which Australian state would you find Bagdad?

ANSWER IS B. Bagdad is a small town 37 kilometres north of Hobart in Tasmania.

7. Which current Club Wyndham South Pacific property was the first to become part of the club? **ANSWER IS D.** The first resort to become part of the club, at that time named Trendwest by Wyndham was Ramada Resort by Wyndham Golden Beach.

8. Which country does the Wallace Line run through?

ANSWER IS D. Indonesia

9. The population of Iceland is closest to? **ANSWER IS C.** 365,000 people

10. Thimphu, the only capital city in the world without traffic lights, is in which country?

ANSWER IS B. Bhutan

HOW DID YOU GO?

Share in the comments below how many you got right. Have any travel questions of your own? Share in the comments and we will use them to build our next travel quiz!



**I'VE BEEN
EVERYWHERE,
MAN**



**CLUB
WYNDHAM**